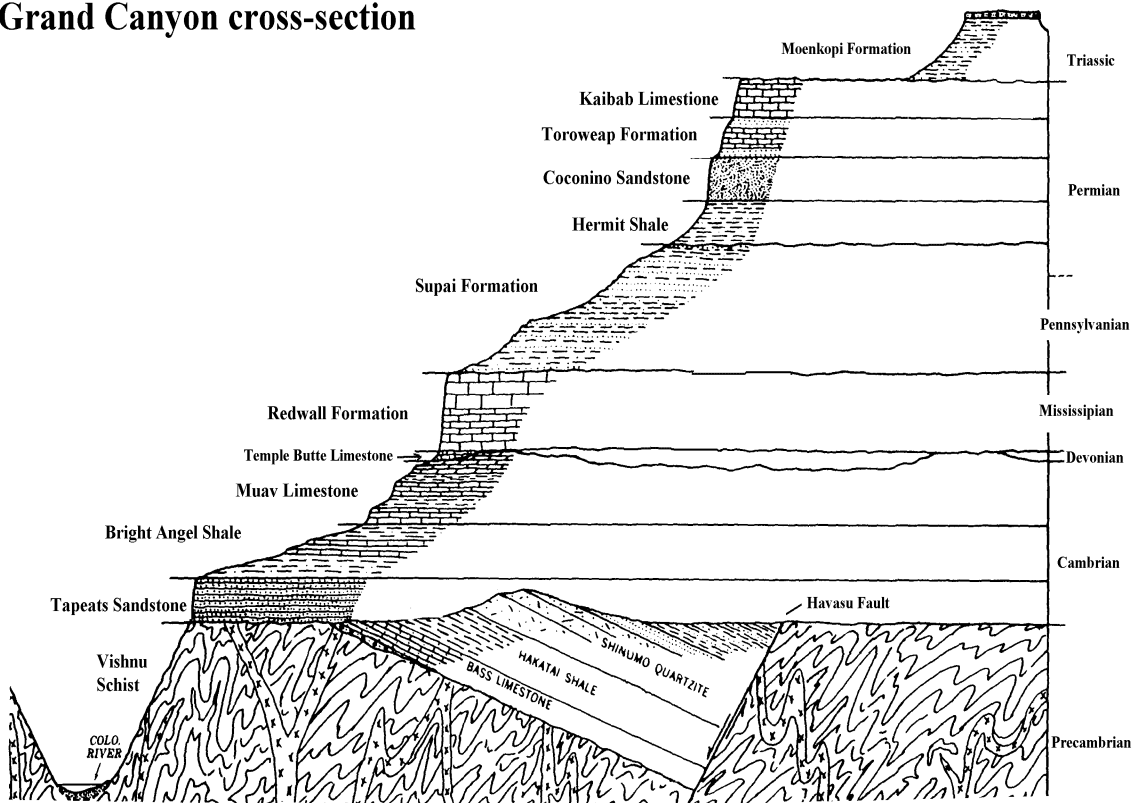


**Homework 1**  
**Geology 3063**  
**August 28, 2000**

1. Interpret the geologic history of the Grand Canyon using the diagram below. List the events in order from the oldest (at the bottom of the page) to the youngest (at the top of the page). For each event describe the principle or observation you used to determine the relative age of that event.

**Grand Canyon cross-section**



*Modified from Shelton, 1966, "Geology Illustrated", Freeman*