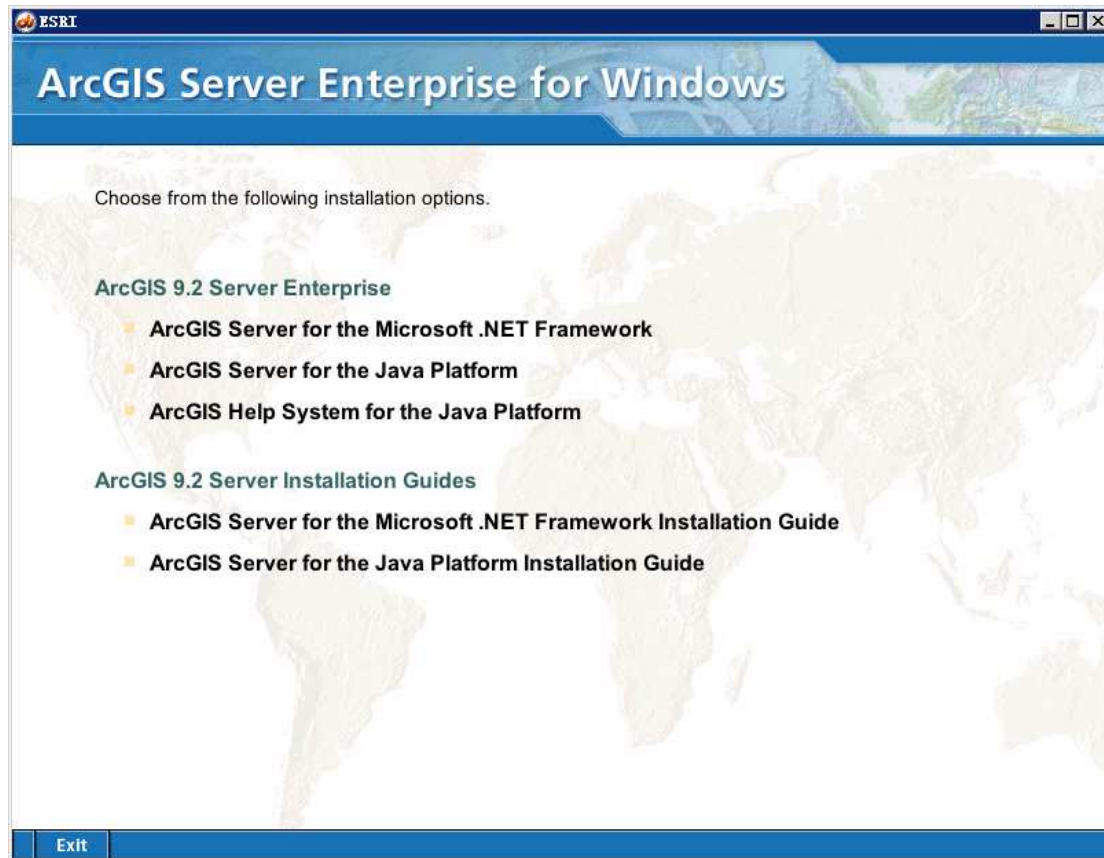
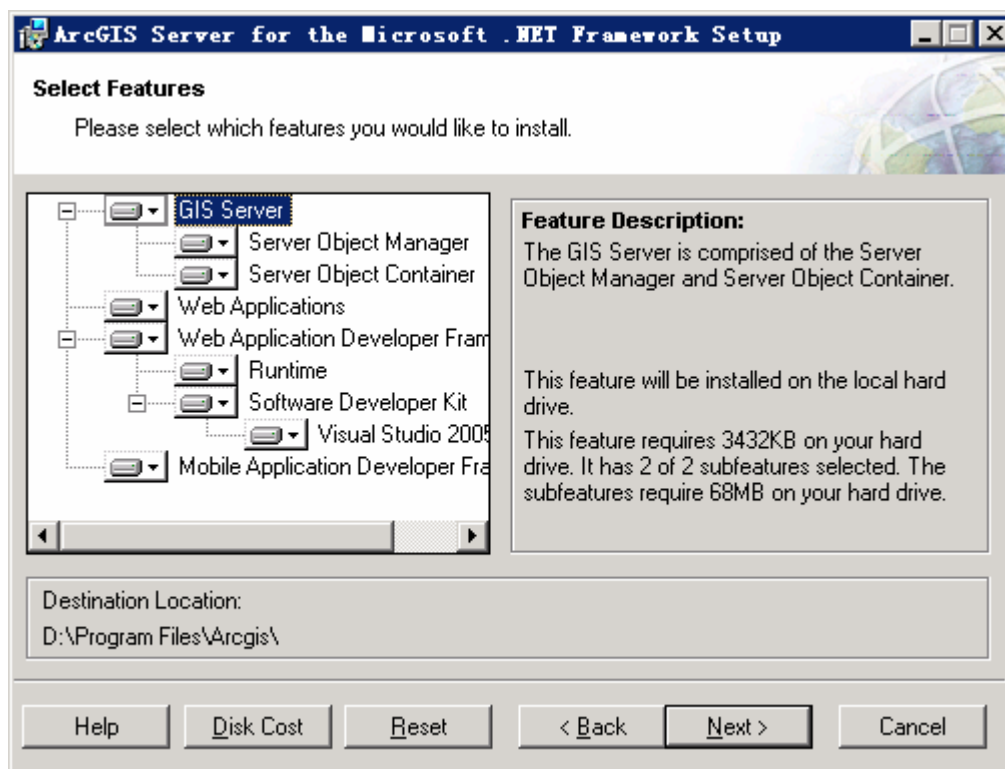
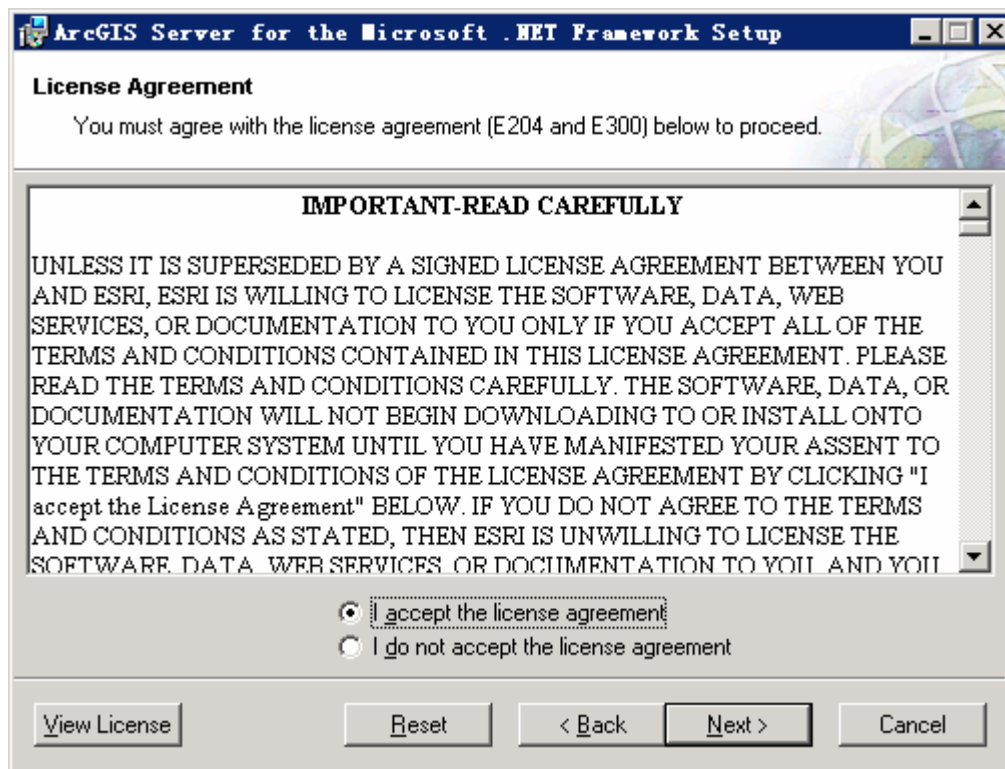
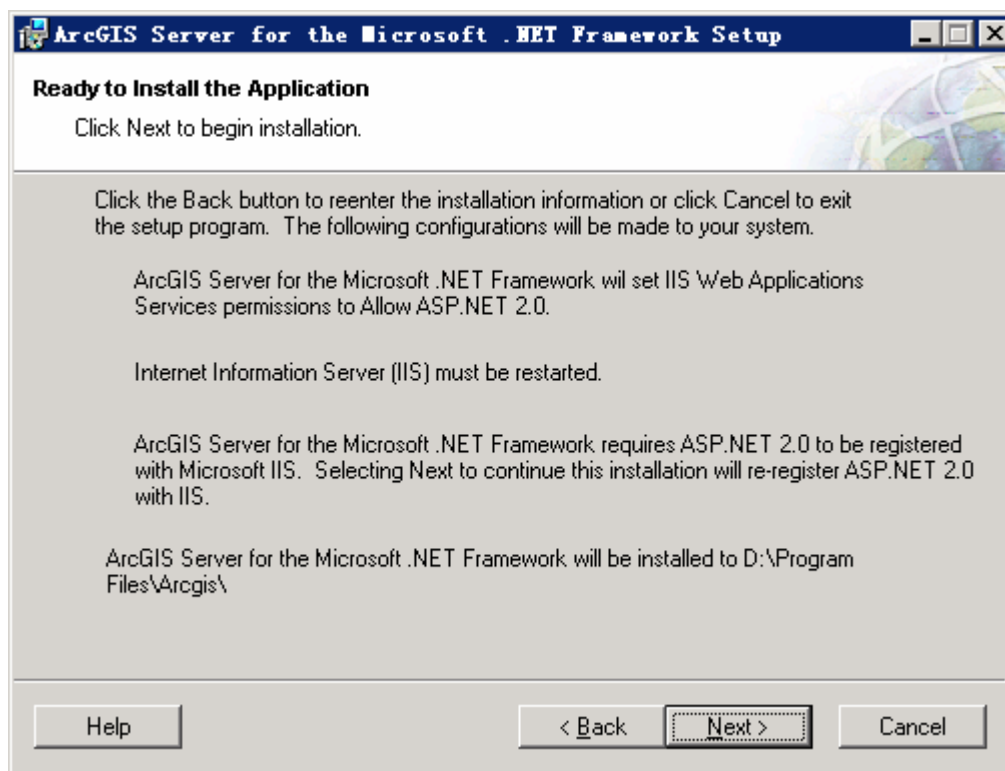
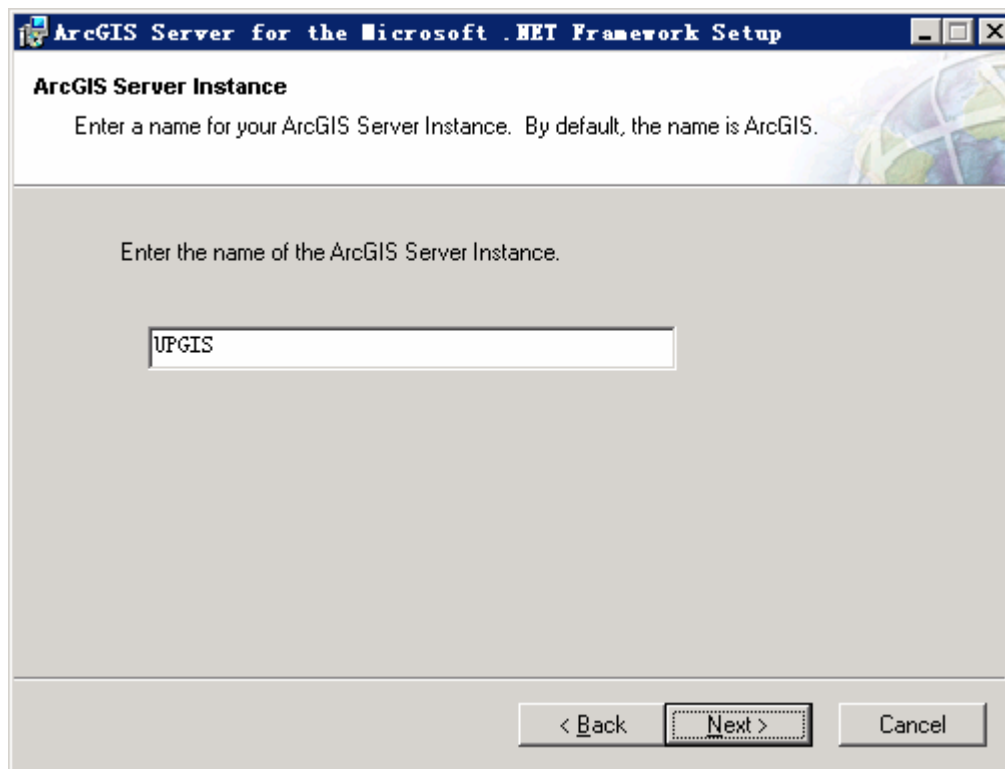
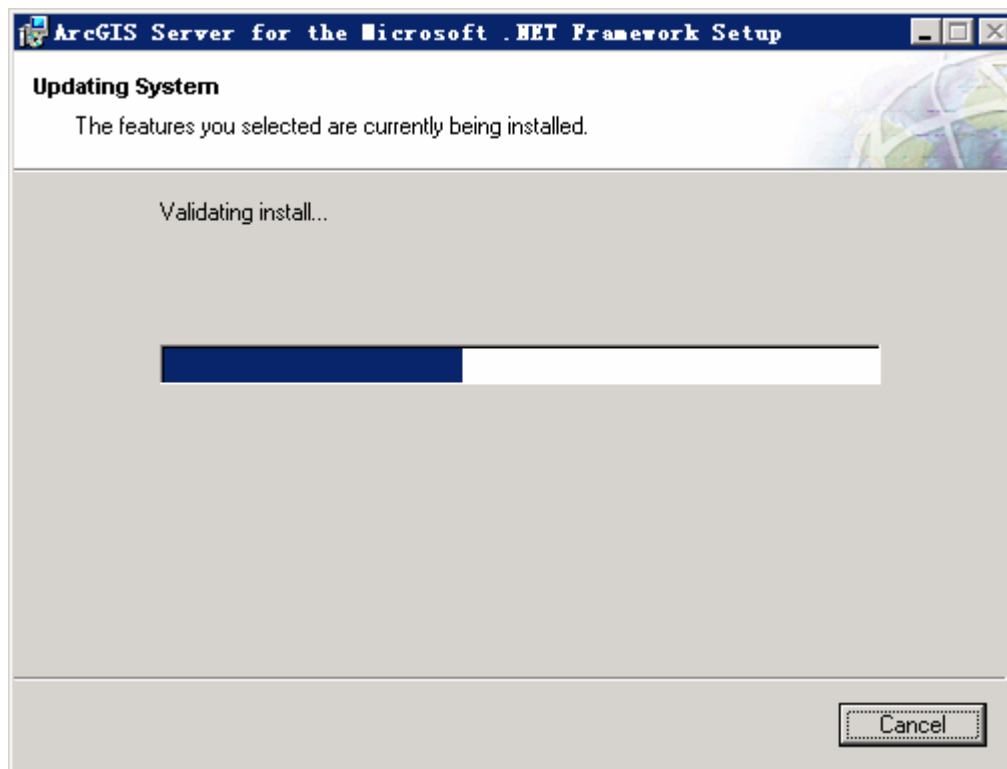
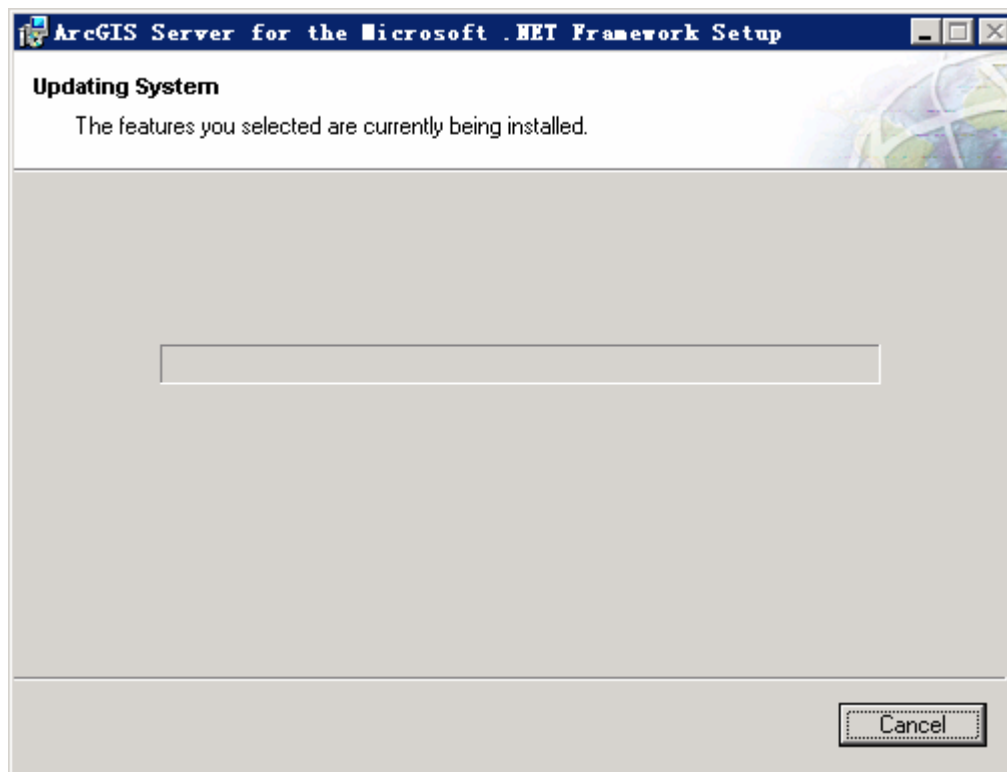


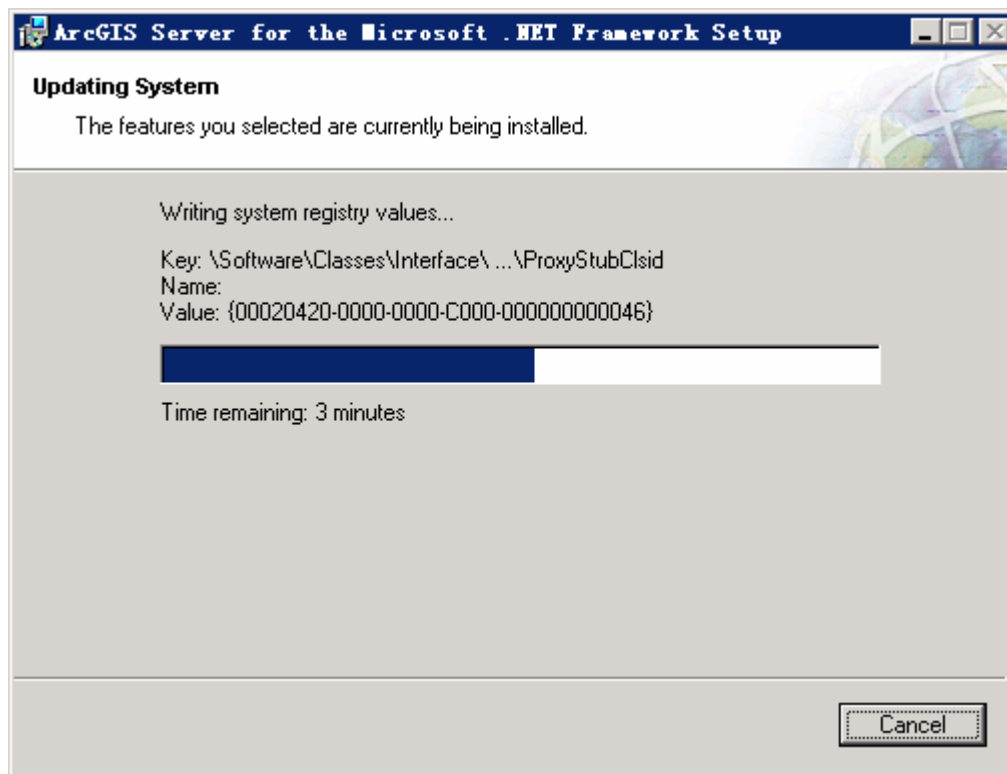
一 安装过程











二 配置 Arcserver

1 GIS Server 配置

GIS Server Post Install ? X

Welcome to the GIS Server Post Install
Select from the following options

This post install helps you specify the user accounts necessary to run the GIS Server on this machine. It will create these user accounts if necessary, and grant them the necessary privileges on the system. It will also create the GIS Server user groups.

☒ **Configure GIS Server**
Select this option to configure the GIS Server for use.

☒ **Authorize GIS Server**
Select this option to authorize the GIS Server for use.

< 上一步(B) 下一步(N) > 取消 帮助

GIS Server Post Install ? X

Specify GIS Server Accounts
Specify the accounts that the Server Object Manager (SOM) and the Server Object Container (SOC) processes will run as.

☒ Specify the account names and passwords:

SOM Account: ArcGIS_SOM
Password:
Confirm password:
SOC Account: ArcGIS_SOC
Password:
Confirm password:

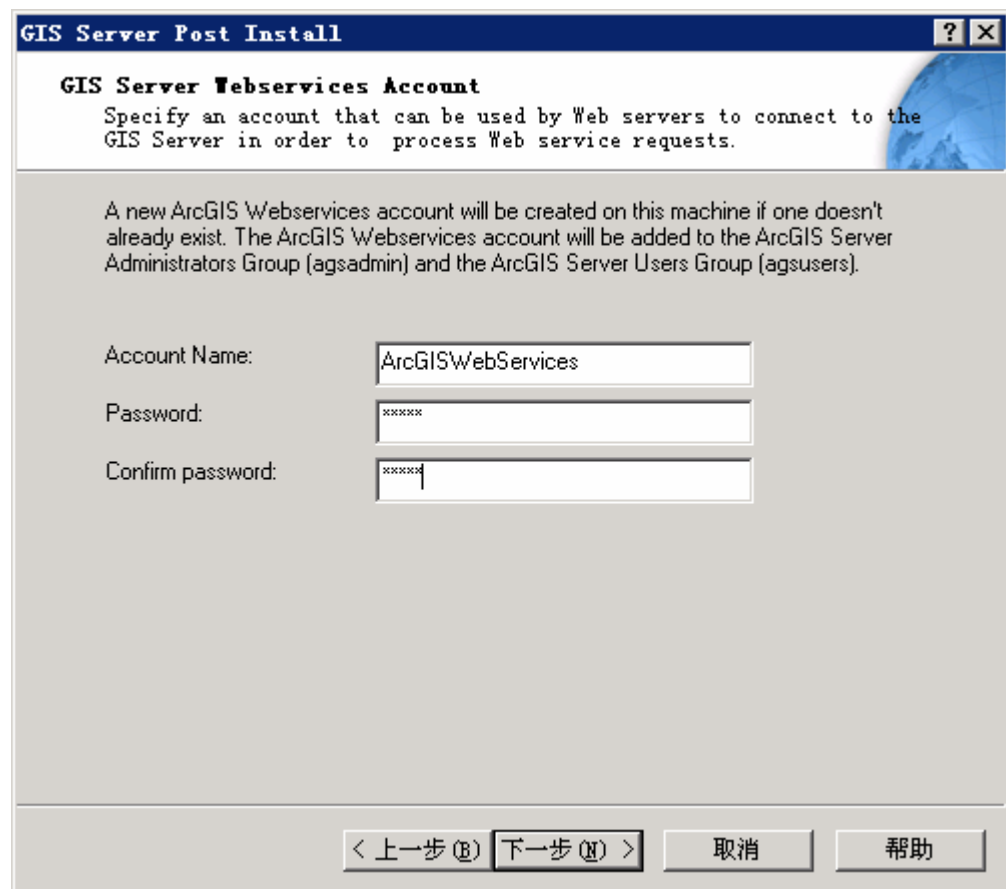
☐ I have a configuration file with the account information generated by a previous run of this setup.
Filename:

< 上一步(B) 下一步(N) > 取消 帮助

管理员账号
创建完毕，要将该
用户添加到
agsadmin 用户组中

管理员账号
创建完毕，要将该
用户添加到
agsusers 用户组中

密码为 upmis



The image shows a Windows-style dialog box titled "GIS Server Post Install". It has a blue header bar with a question mark icon and a close button. The main content area has a light gray background. At the top, it says "GIS Server Webservices Account" in bold, followed by a description: "Specify an account that can be used by Web servers to connect to the GIS Server in order to process Web service requests." Below this, a paragraph explains: "A new ArcGIS Webservices account will be created on this machine if one doesn't already exist. The ArcGIS Webservices account will be added to the ArcGIS Server Administrators Group (agsadmin) and the ArcGIS Server Users Group (agsusers)." There are three input fields: "Account Name:" with the text "ArcGIS\WebServices", "Password:" with "xxxxxx", and "Confirm password:" with "xxxxxx". At the bottom, there are four buttons: "< 上一步 (B)", "下一步 (N) >", "取消", and "帮助".

GIS Server Post Install

GIS Server Webservices Account
Specify an account that can be used by Web servers to connect to the GIS Server in order to process Web service requests.

A new ArcGIS Webservices account will be created on this machine if one doesn't already exist. The ArcGIS Webservices account will be added to the ArcGIS Server Administrators Group (agsadmin) and the ArcGIS Server Users Group (agsusers).

Account Name:

Password:

Confirm password:


< 上一步 (B) 下一步 (N) > 取消 帮助

密码为 upmis

GIS Server Post Install ? X

Specify GIS Server directories
Specify a location for creating GIS Server directories and the name of your web server.

The GIS Server uses directories in the file system to store output images, geoprocessing jobs, map caches, and globe caches. Click the file browse button to change the default location.

Location: 

Web Server Name:

< 上一步(B) 下一步(N) > 取消 帮助

GIS Server Post Install ? X

Specify proxy server options.
Is a proxy server required to connect to GIS Servers?

☒ Do not use a proxy server for GIS Server connections.

☐ Use a proxy server for GIS Server connections.

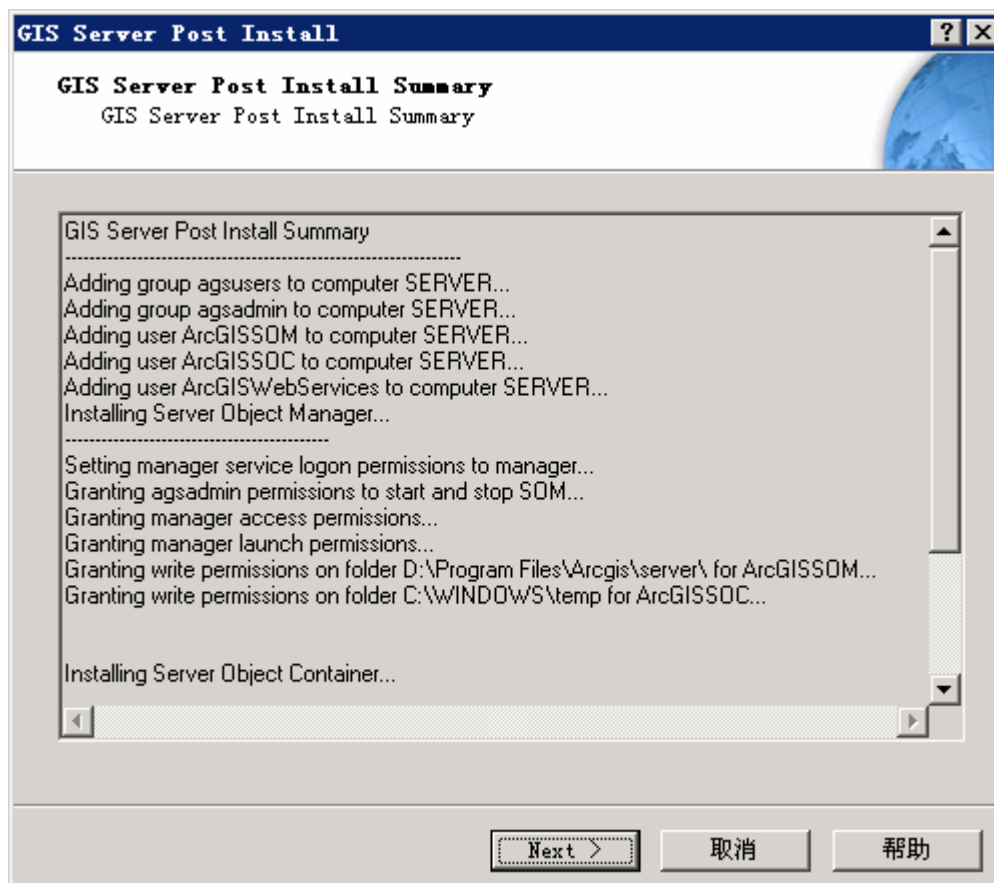
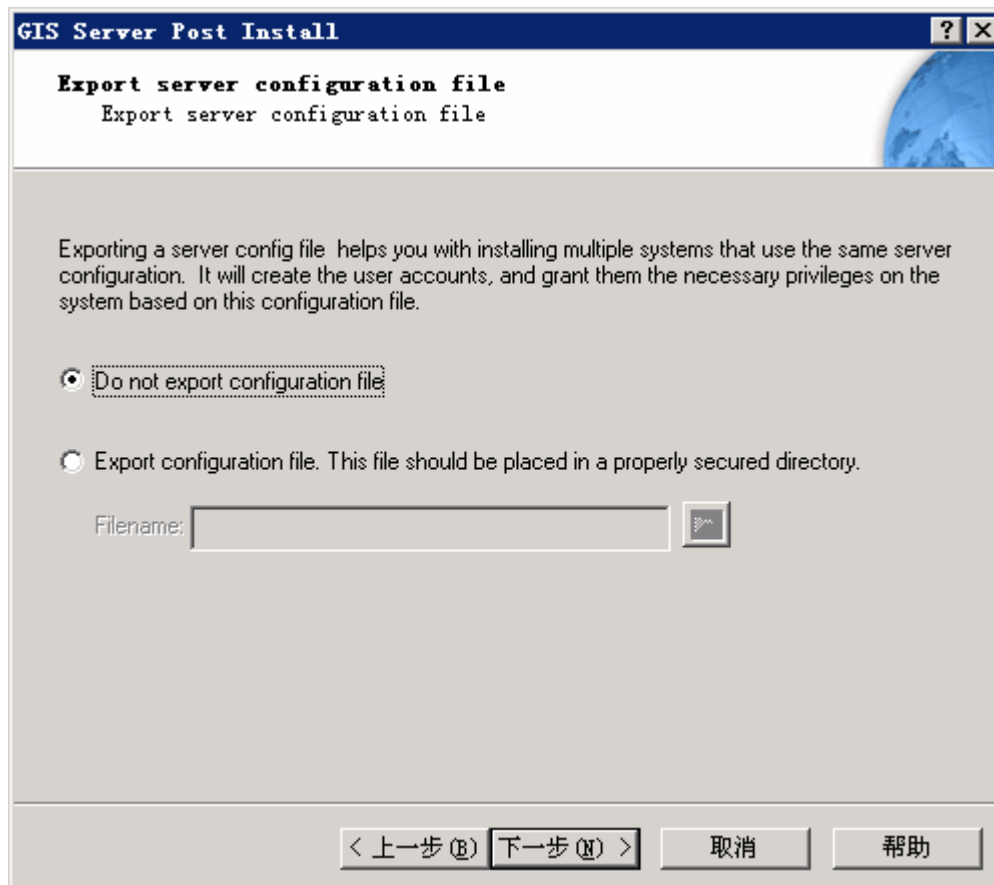
Address:


Port:

Username:

Password:

< 上一步(B) 下一步(N) > 取消 帮助



Software Authorization Wizard 

Registration Options
You must register the software prior to use. Select from the options below.

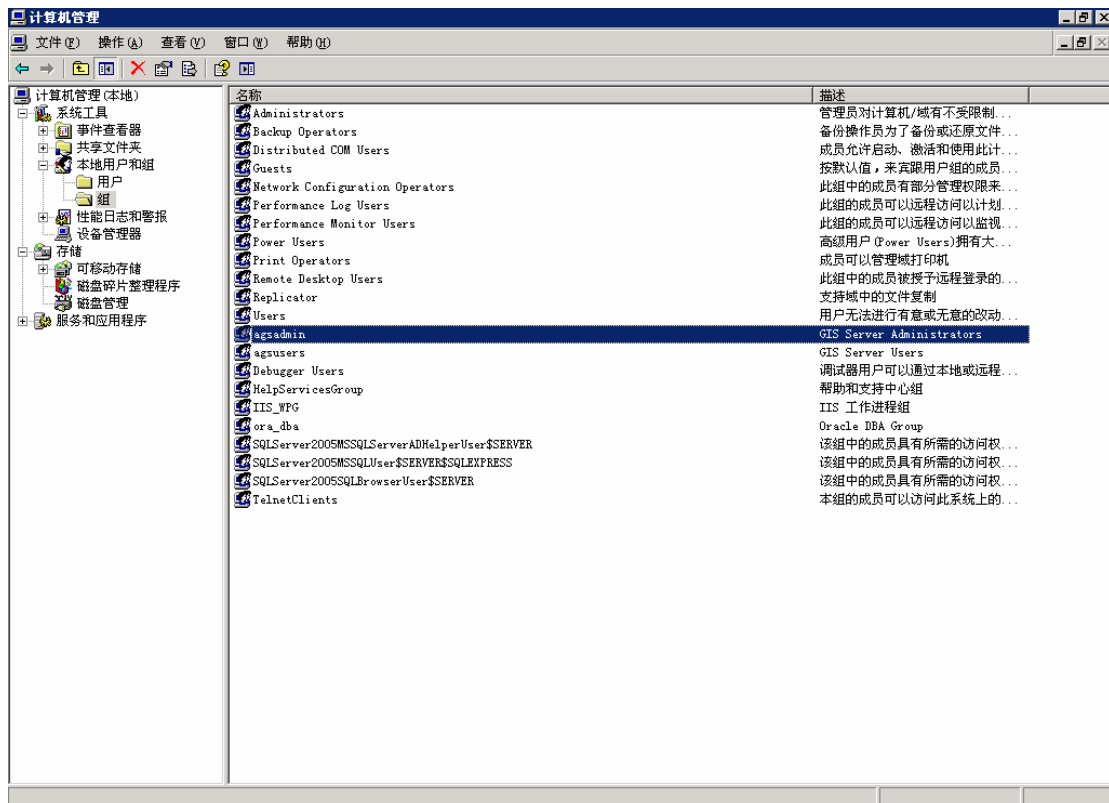
Registration Options

☒ I have installed my software and need to register it.

☐ I have already registered the software and need to register additional options or extensions.

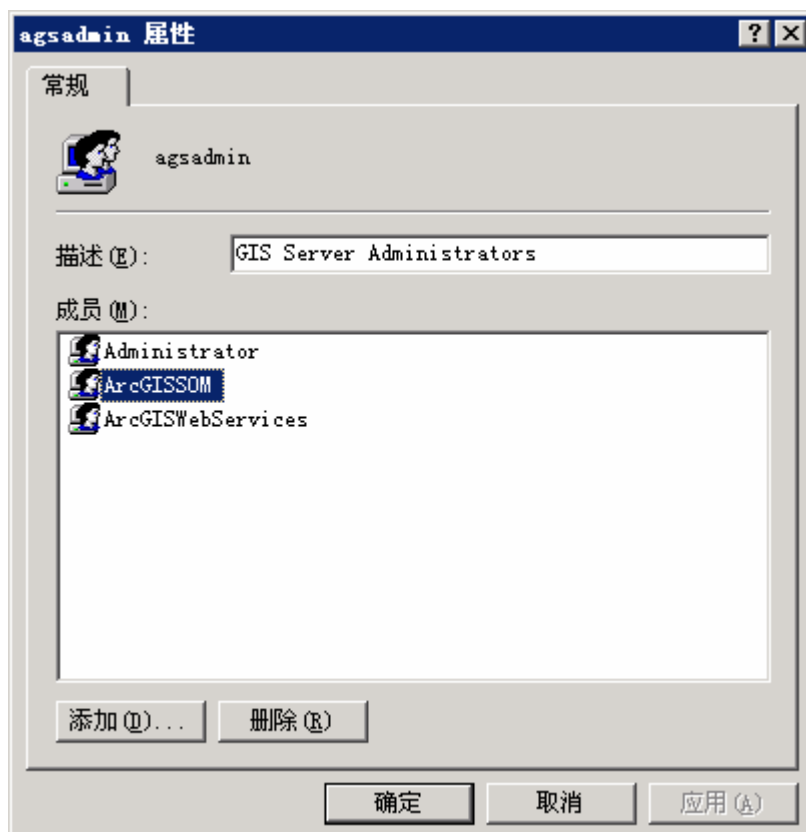
☐ I have received an authorization file from ESRI and am now ready to finish the registration process.

< 上一步(B) **下一步(N) >** 取消

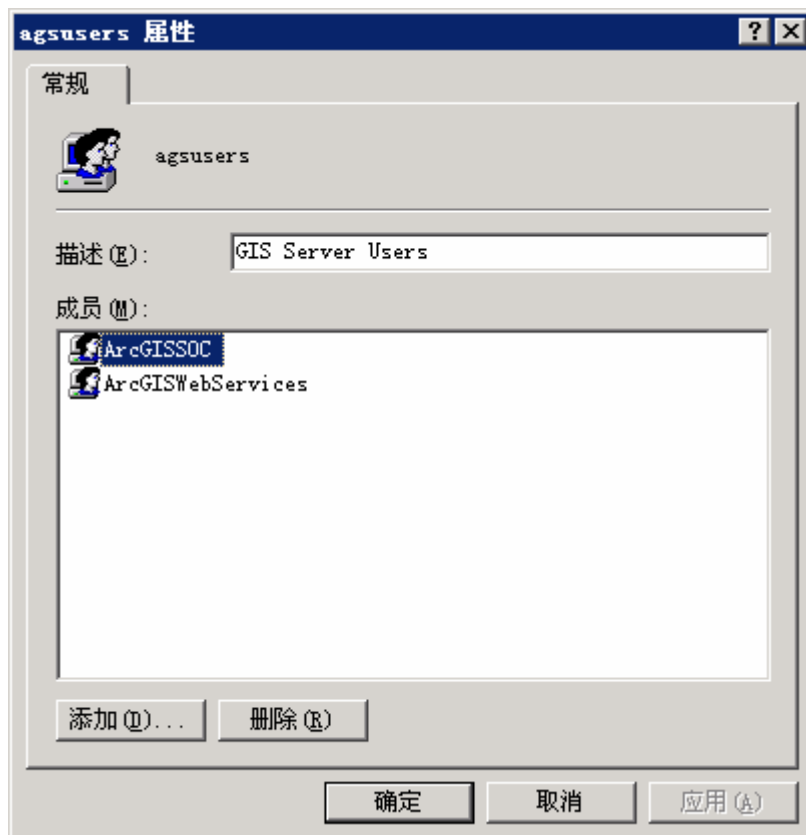


将你刚才创建的管理员账号(ArcGISSOM)加入 Agsadmin 即可。(添加—)高级—快速查找)

图中 ArcGISSOM 即为我刚才创建的管理员账号



类似将刚才创建的用户帐号(ArcGISSOC)和登陆本台计算机的帐号加入 Agsusers, 图中 b 即为我刚才创建的管理员账号, ZH 为我登陆本机的账号



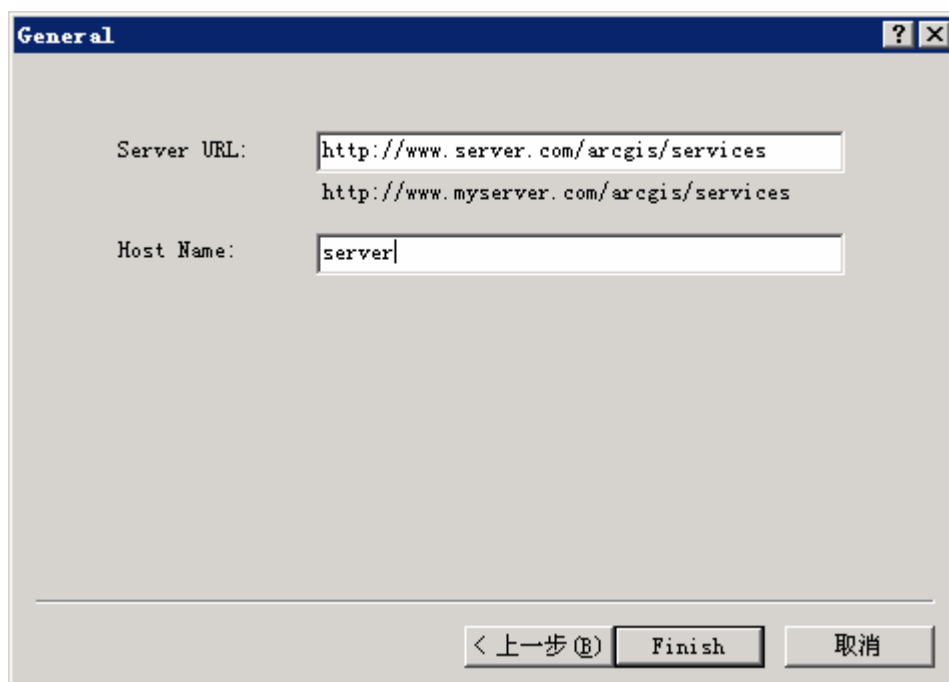
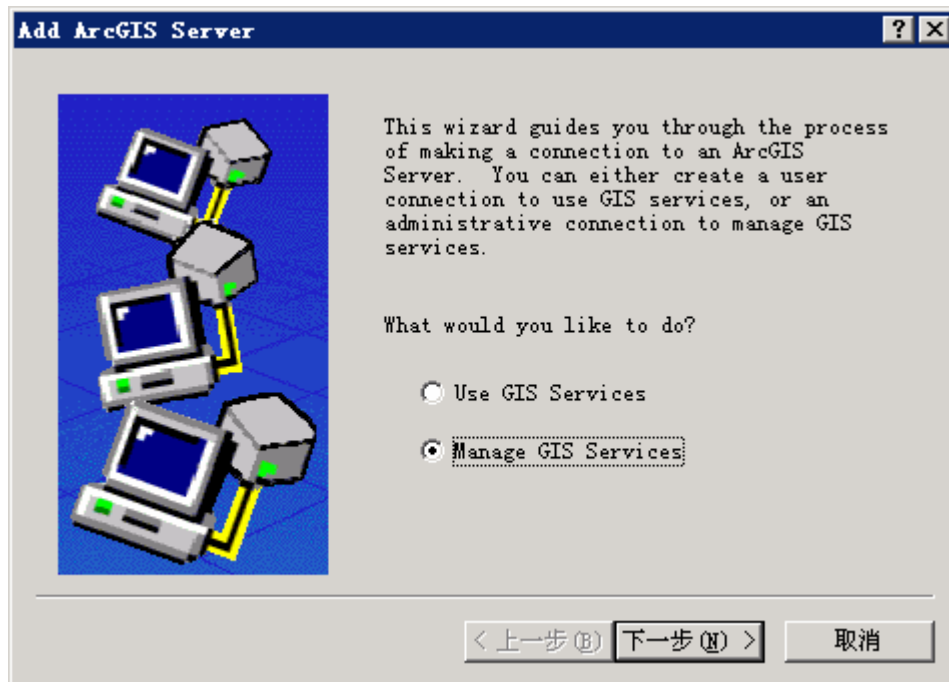
2 配置服务数据和验证

配置完毕, 可打开 CATALOG 创建一个来检验

创建过程如下:

双击 Add Arcgis Server, 一般选择 Manage GIS Services,

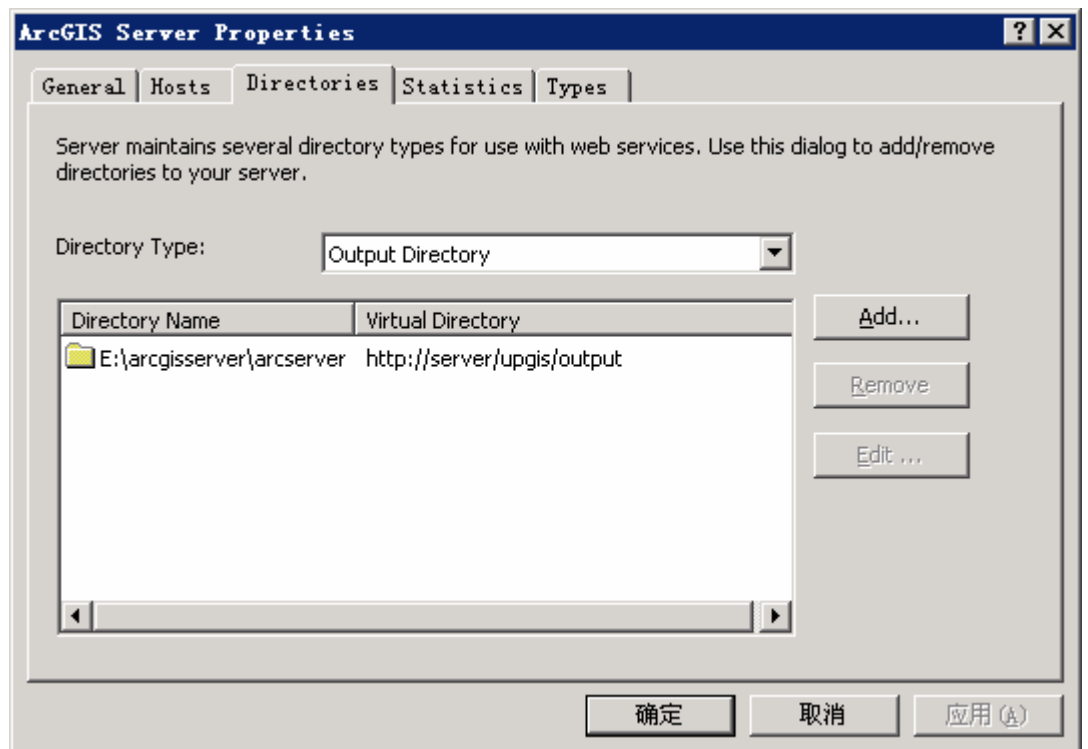
弹出一个对话框, 在 Server 一栏里填上你本机名, 点击 FINISH, 若你添加的服务前面没有叉, 表明安装成功



<http://www.server.com/arcgis/services>

server


右键刚创建的 server ， 点击 “Server Properties”， 弹出如下窗体，



设置好各类参数，在“Directories”选项卡中，添加输出目录及其虚拟目录，一定要确保输出目录和虚拟目录的权限最大（添加 aspnet,administrator,everyone 等用户保证其权限为完全控制）

完毕后，再右键“Add New Services”，弹出如下配置向导：

Add GIS Service



This wizard lets you define and configure a new service.

Name:

Type:

Description:

Startup Type:

< 上一步(B)

下一步(N) >

取消


Add GIS Service

?

×

Map Document:

E:\arcgisserver\arcserver\SJCG.mxd



Data Frame:

Active Data Frame

C

hange...

Specify output directory

Directory:

E:\arcgisserver\arcserver

▼

Virtual Directory:

http://server/upgis/output

Supported Image Return Type:

MIME + URL

Specify cache directory

Server Cache Directory:

E:\arcgisserver\arcgiscache

▼

< 上一步 (B)

下一步 (N) >

取消

Add GIS Service

☒ Mapping (always en...

☐ WMS

☐ Mobile Data Access

☐ KML

☐ Network Analysis

☒ Enable Web Access

URL:

http://www.server.com/arcgis/services/sjcg

Operations allowed:

☒ Map

☒ Query

☒ Data

Properties

<There are no properties for this capability>

< 上一步(B)

下一步(N) >

取消

Add GIS Service ? X

Pooling

This service should be:

☐ Pooled - Used repeatedly by many clients.

☒ Not pooled - Used by a single client and disposed of after use.

Minimum number of instances: 1

Maximum number of instances: 2

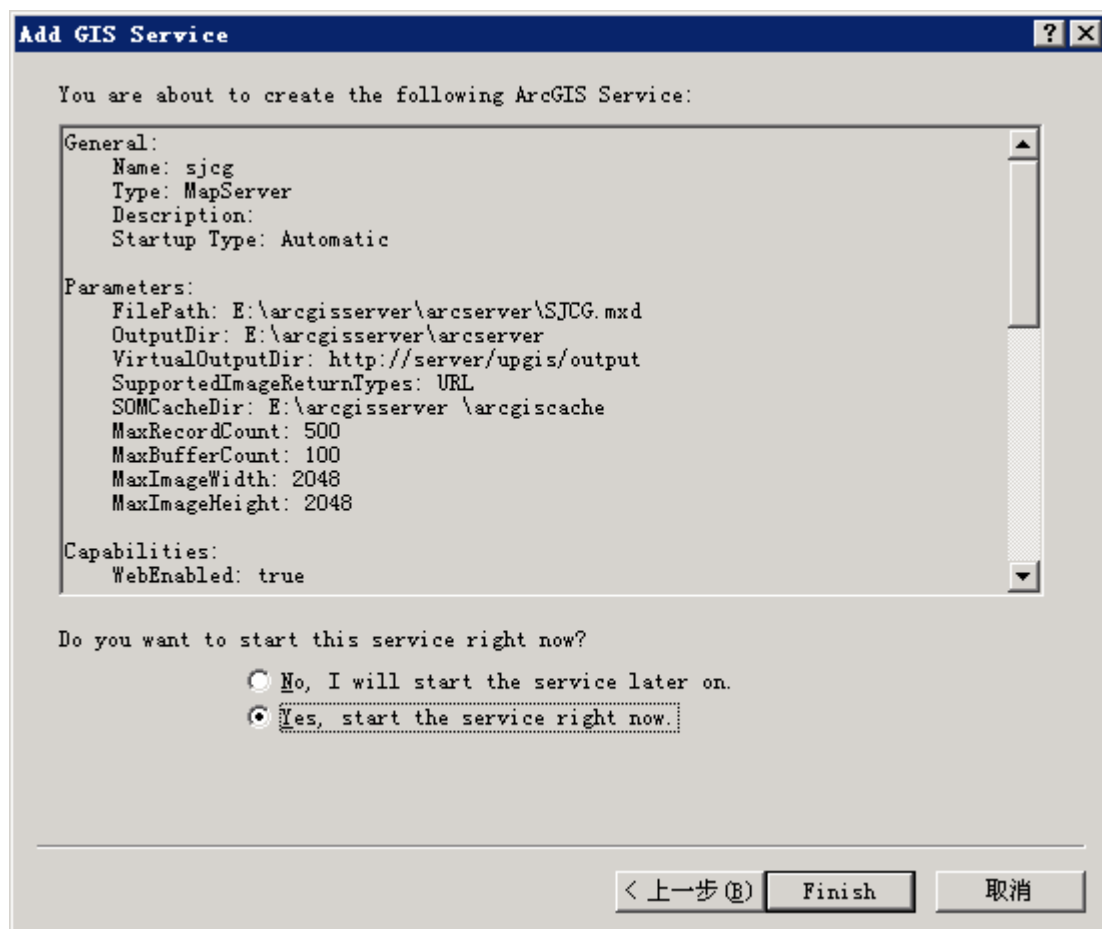
Timeouts

The maximum time a client can use a service: 600 seconds

The maximum time a client will wait to get a service: 60 seconds

< 上一步(B) 下一步(N) > 取消

(该项里最好选择第二项：Not pooled)



点击“FINISH”，启动 service，如果成功，会在 Server 目录下生产一个 services，点击，右边的预览窗口，如果能正常预览，则配置成功。

